

DA 'CRETE™ 'E-Prime-2K' – Pore Blocking Primer for Da 'Crete 'SealKoat'. Helps bonding of concrete and Da 'Crete 'SealKoat'

ABOUT

Solvent free, environment friendly, high quality, pore blocking, quick setting, sealing, film forming, 2 component epoxy primer for Da 'Crete 'SealKoat' to help waterproofing of concrete structures.

APPLICATIONS

Used as primer for Da 'Crete SealKoat' in waterproofing of concrete structures like.



- Roof Tops, Parking lots
- Roof Gardens
- Balconies, Podium Slabs
- Planetary Boxes

INSTRUCTIONS



No Rain in +/- 24 hours

Ensure the floor is dry for application and No Rain forecast in next 24 hours of application.



Treat Severe Cracks

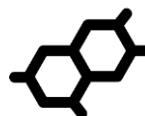
If there are serious visible cavities / cracks, seal those with Da 'Crete 'SealKoat – PU Putty' and wait for 6-8 hours. Alternately, any fast curing epoxy putty from local market may be used. Please contact us for details.

BENEFITS



Easy to Apply

Mix 2 components as supplied and apply using a paint-applying (nylon) roller.



Excellent bonding

Excellent bonding with concrete and Da 'Crete 'SealKoat'.



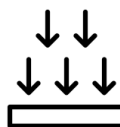
Sealing & Film-Forming

Film formation helps sealing cracks / pores, when used with Da 'Crete 'SealKoat'.



Quick Curing / Setting

Averagely sets in 30 to 45 Minutes, based on ambient temperature, expediting application of 'SealKoat'.



Porosity based Consumption

Primer seals pores in substrate, so porous concrete absorbs higher primer quantity to form film.



Top Quality but Affordable

Specially designed to offer many features at an affordable price.



Remove loose dust

Wipe of all the loose dust and foreign matter from the surface either manually or mechanically. Recommend buffing machine to remove dust / dirt / grease etc.



Add Part-A & Part-B, Mix

Take a 5 liter clean, dry bucket. Empty the contents of Part-A (liquid) and Part-B (liquid) completely into the clean & dry bucket. Part mixing is not allowed. Mix using electrically operated Helix Spiral Rod mixer with 500 – 600 RPM Mixer (electric paint mixer) till you get a uniform-consistency.



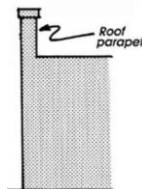
Nylon Roller

Immerse the roller in the above matrix and keep applying it on the dust free cleaned substrate. Apply the matrix once again as a second coat.



Observe & Reapply

After about 5-10 minutes of application, a few areas dry out due to absorption into the substrate. Reapply E-Prime in such areas again.



Apply on vertical also

Start applying E-Prime from the vertical portions. Usually, in coving area, E-Prime is applied till 6" height on the vertical side (parapet wall etc), over which Da 'Crete 'SealKoat – PU Putty' is applied. A greater height may be required depending on the intended area to apply 'SealKoat – PU Putty'.

PACK SIZE

Standard Pack

Part-A (Base)	: 2 Kg
Part-B (Hardener)	: 1 Kg
Total	: 3 Kg

COVERAGE

4 to 5 SQM / Kg is the usual consumption. However, actual consumption will vary depending on porosity and profile of the substrate.

PPEs REQUIRED

Please use the same PPEs as listed in Da 'Crete 'SealKoat'.

The information given is based on data and knowledge considered to be true and accurate and is offered for the user's consideration, investigation and verification. Since the conditions of use are beyond our control, we do not warrant the results to be obtained.

Da 'Crete Chem Pvt. Ltd, First Floor, 6-2-47, AC Guards, Lakdikapool, Hyderabad, India – 04.

+91 76989 12345

mail@dacrete.com

www.dacrete.com